

A satellite is shown in orbit above the Earth. The satellite is a complex structure with various instruments and antennas. The Earth's surface is visible below, showing a mix of land and water. The background is the blackness of space.

European Space Imaging

Your European Partner
for Global Very High-Resolution Satellite Imagery

Company overview

Established 2002

Location: Munich, Germany

Staff: 35 members

European Space Imaging is a leading supplier of global very high-resolution (VHR) satellite imagery and derived services.

We provide tailored VHR imagery solutions to meet the diverse project requirements of our customers.

- Operating a multi-mission capable ground station
- Entire DigitalGlobe satellite constellation + archive
- Tailored solutions: products, services, license
- Expert and personalized customer service
- A network of 60+ resellers across Europe



Ground Station

Dedicated ground station for direct satellite tasking

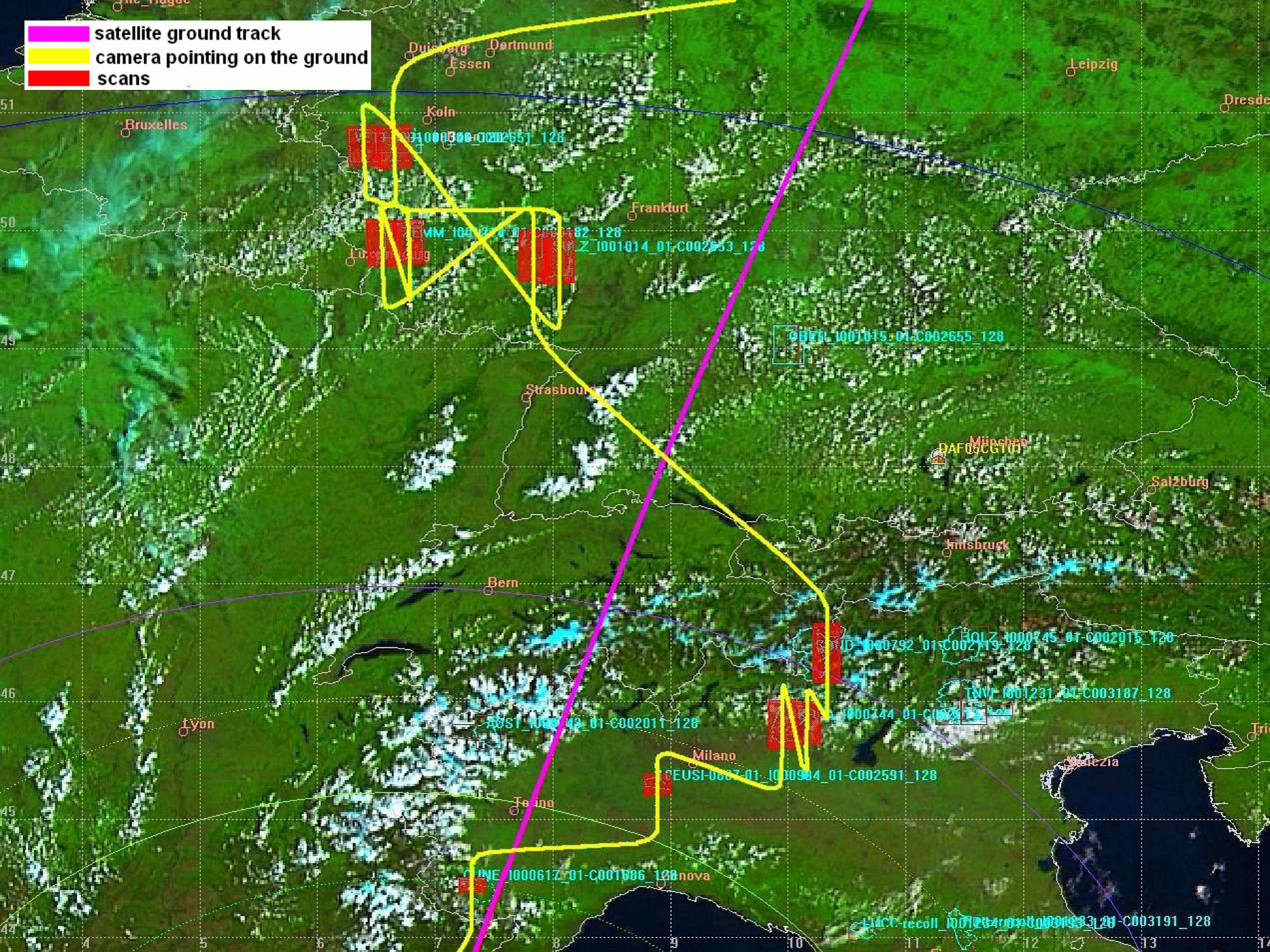
- Direct Access Facility (DAF) located near Munich
- Collection planning and data production from all the DigitalGlobe satellites

BENEFITS:

- Last minute order entry
- Maximization of collection results
- Minimize cloud cover
- Maximize area
- Maximize collection yield (# targets)
- Fast production
- Near real-time delivery

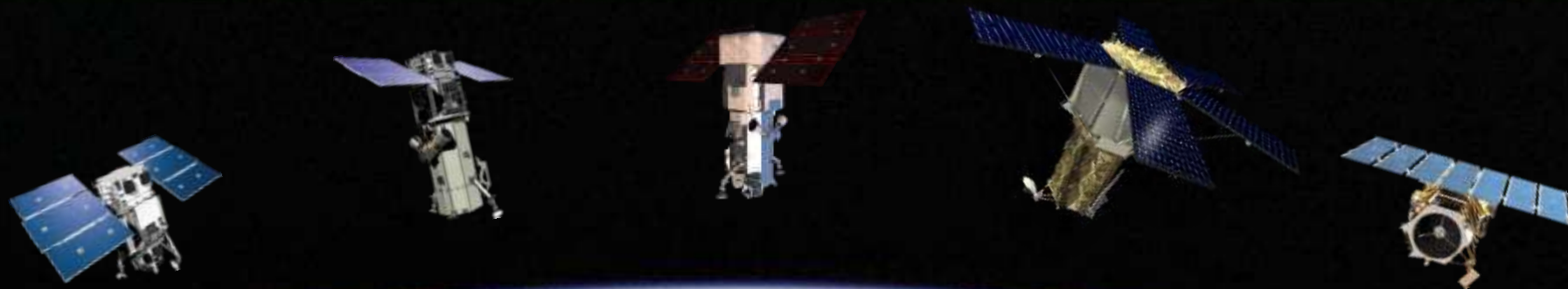


- satellite ground track
- camera pointing on the ground
- scans



Satellites

In orbit:



WorldView-1

50cm B/W
stereo

WorldView-2

46cm
8-band color
stereo

WorldView-3

31cm
8-band color stereo
8-band SWIR

WorldView-4

31cm
4-band color

GeoEye-1

41cm
4-band color

In archive:



IKONOS

80 cm
4-band color



QuickBird

60 cm
4-band color

Leading Satellite Constellation



- Largest fleet of VHR satellites
5 satellites in orbit



- Highest spatial resolution
Up to 31 cm per pixel



- Highest spectral resolution on VHR satellites
8 spectral bands on WorldView-2 and WorldView-3
+ 8 extra SWIR bands on WorldView-3



- Largest archived collection
More than 5 billion km² imagery
Historical imagery back to 1999
Growing by more than 3 million km² every day

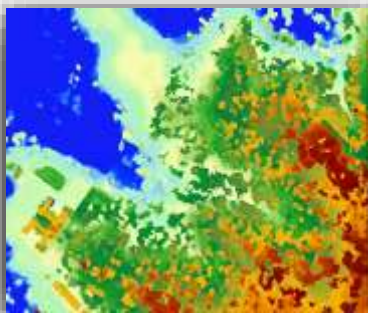


Products

PRODUCTS

Very High-Resolution data and derived products

We supply global coverage to European customers offering over 5 billion km² of imagery which increases daily



Raw imagery

Stereo Products

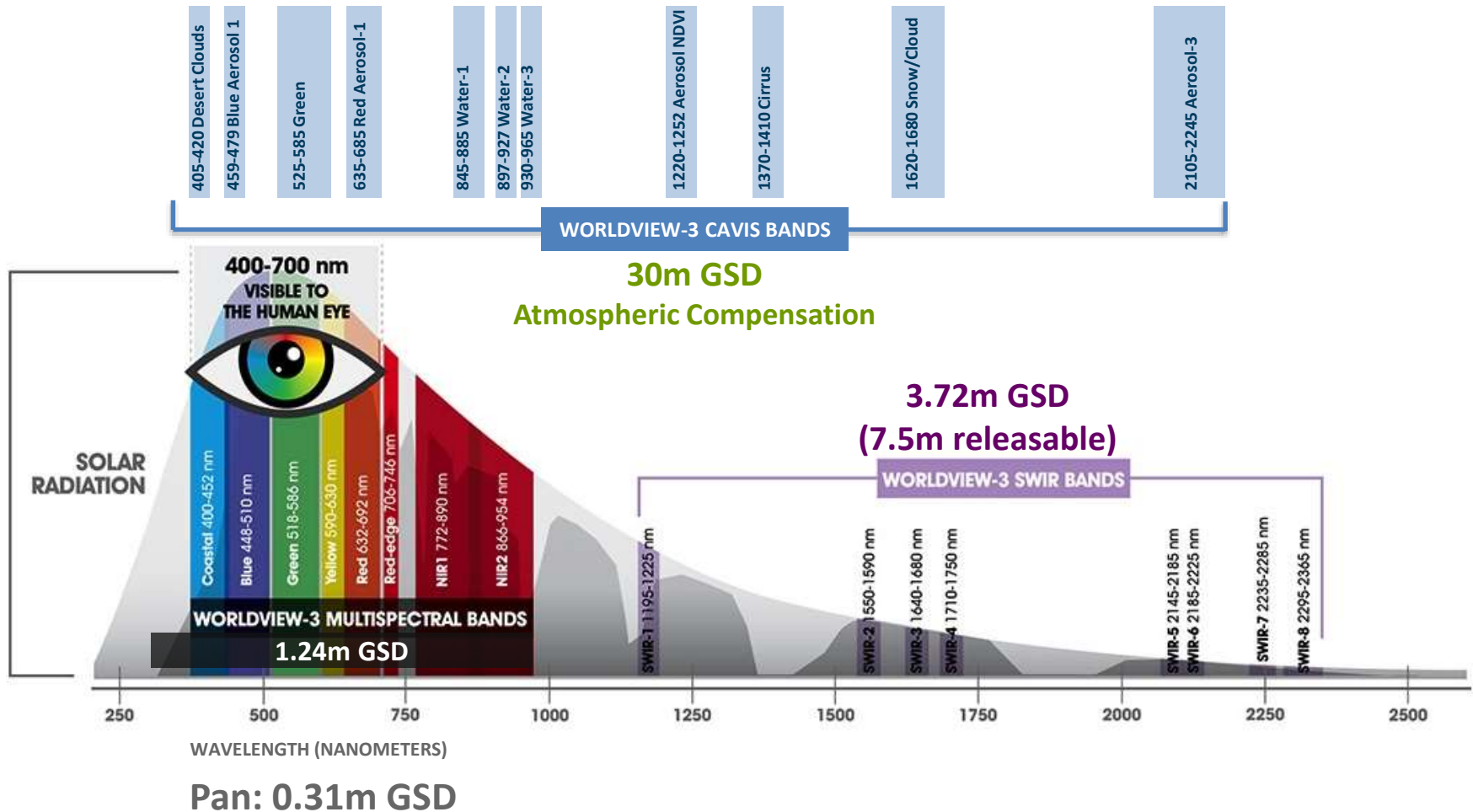
Orthorectified Products

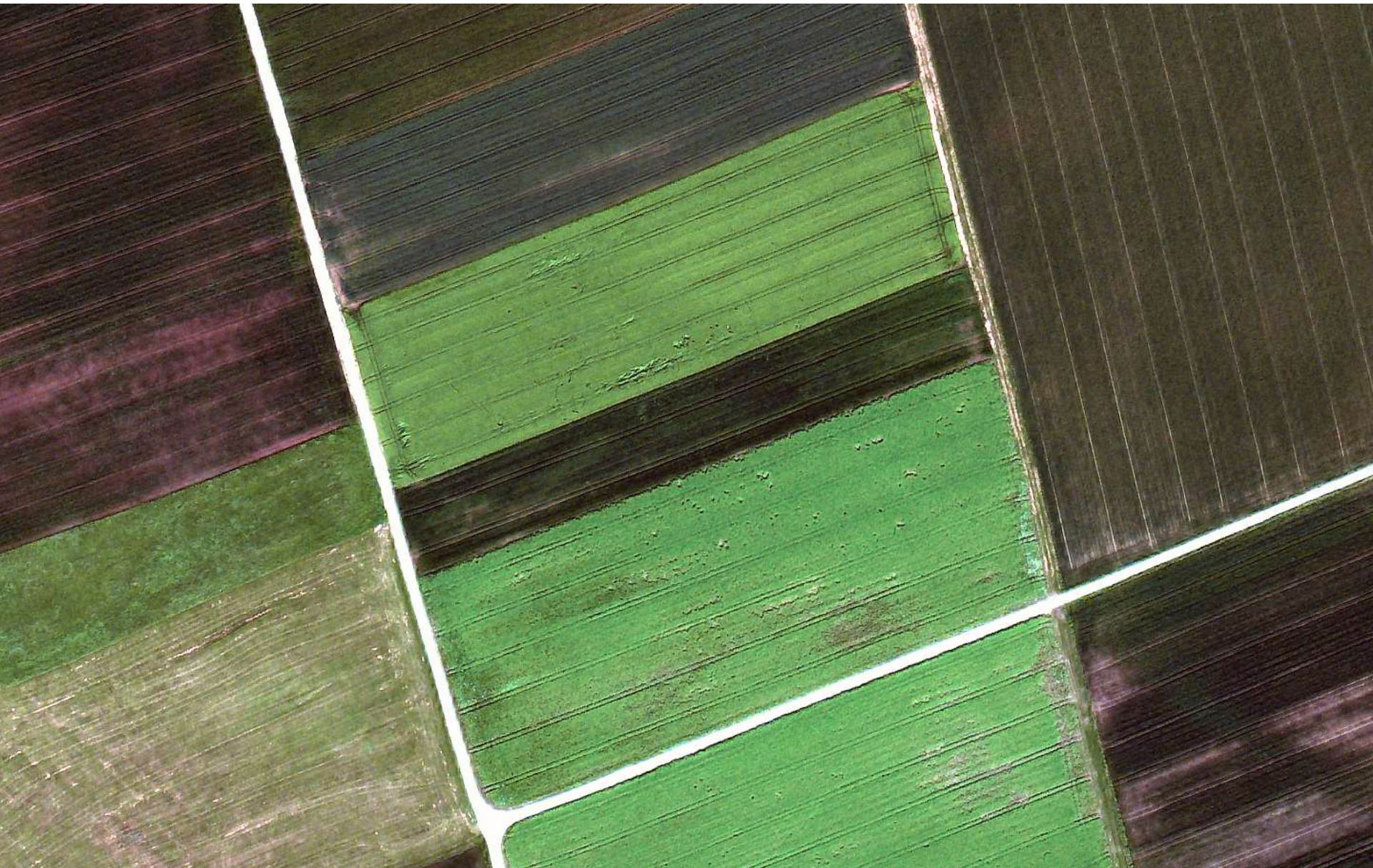
Digital Elevation Models

Online Imagery

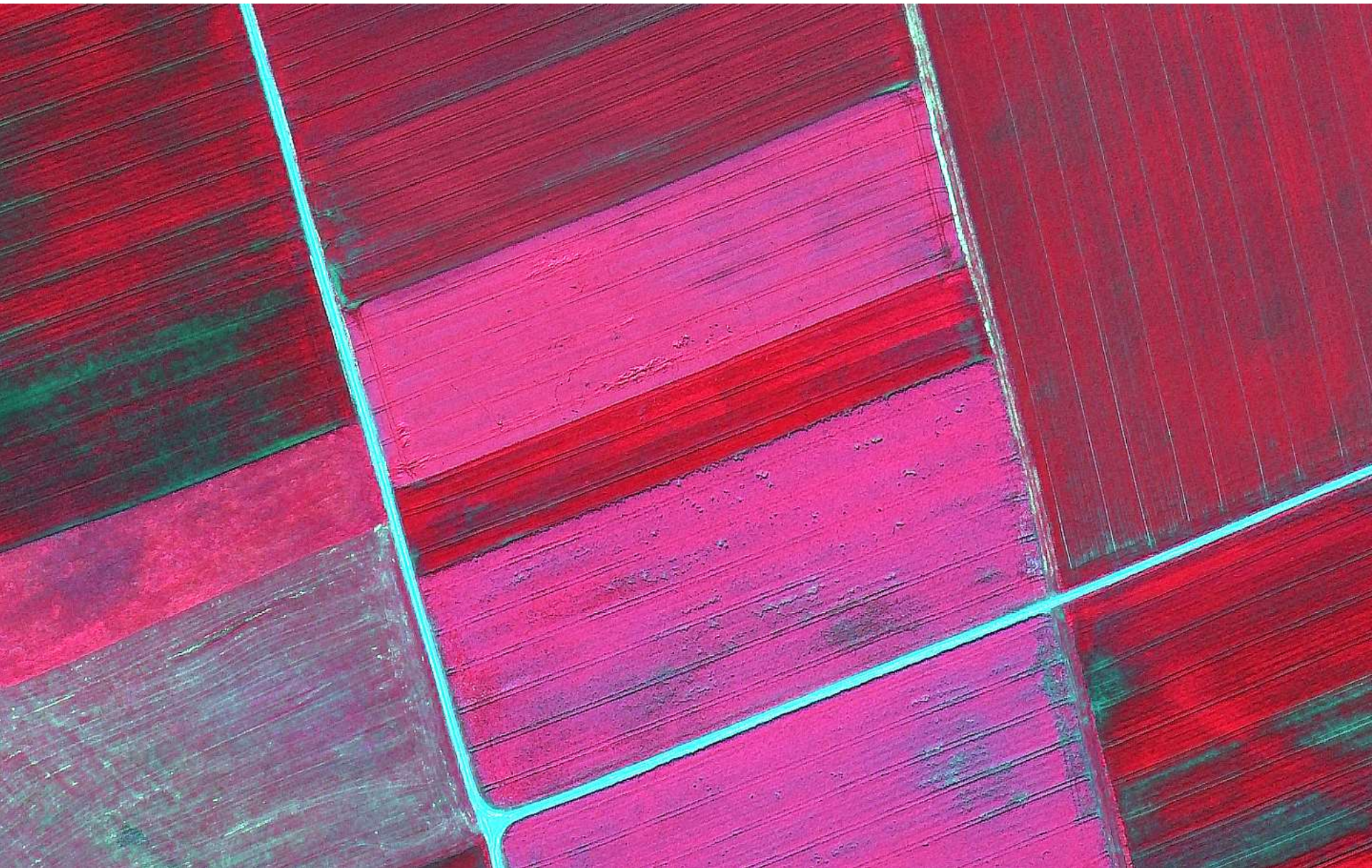
PRODUCTS

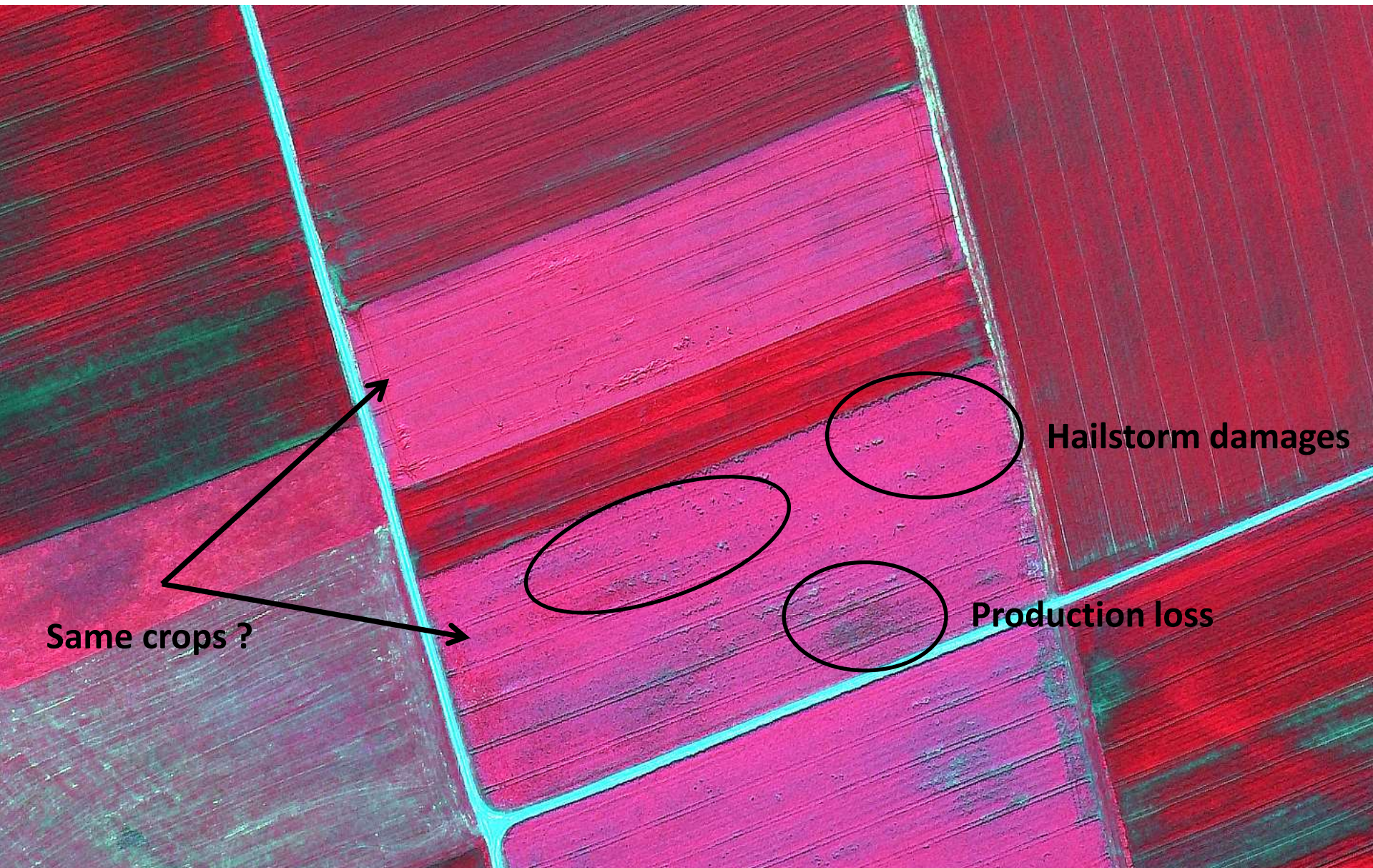
WorldView-3 is the only high-resolution “super spectral” (> 10 bands) satellite in the industry





WorldView-3, 30 cm resolution, PIR1 – Red – Green

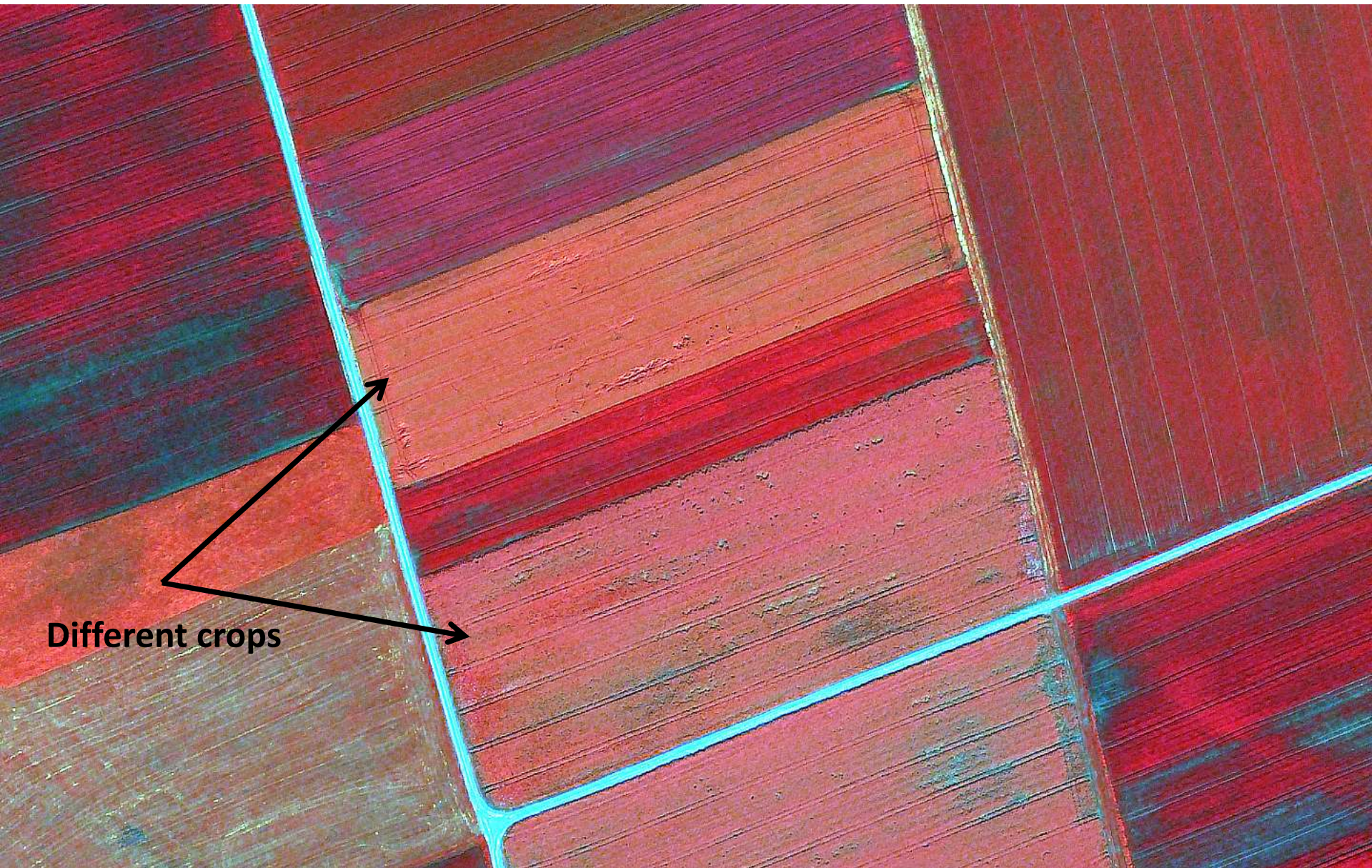




Same crops ?

Hailstorm damages

Production loss



Different crops

How smallholder fields look to Sentinel-2 data

- Pixels are heavily mixed between crops and non-crops
- HR imagery is too coarse for intra-field assessment
- In-fields scouts needed to get insights

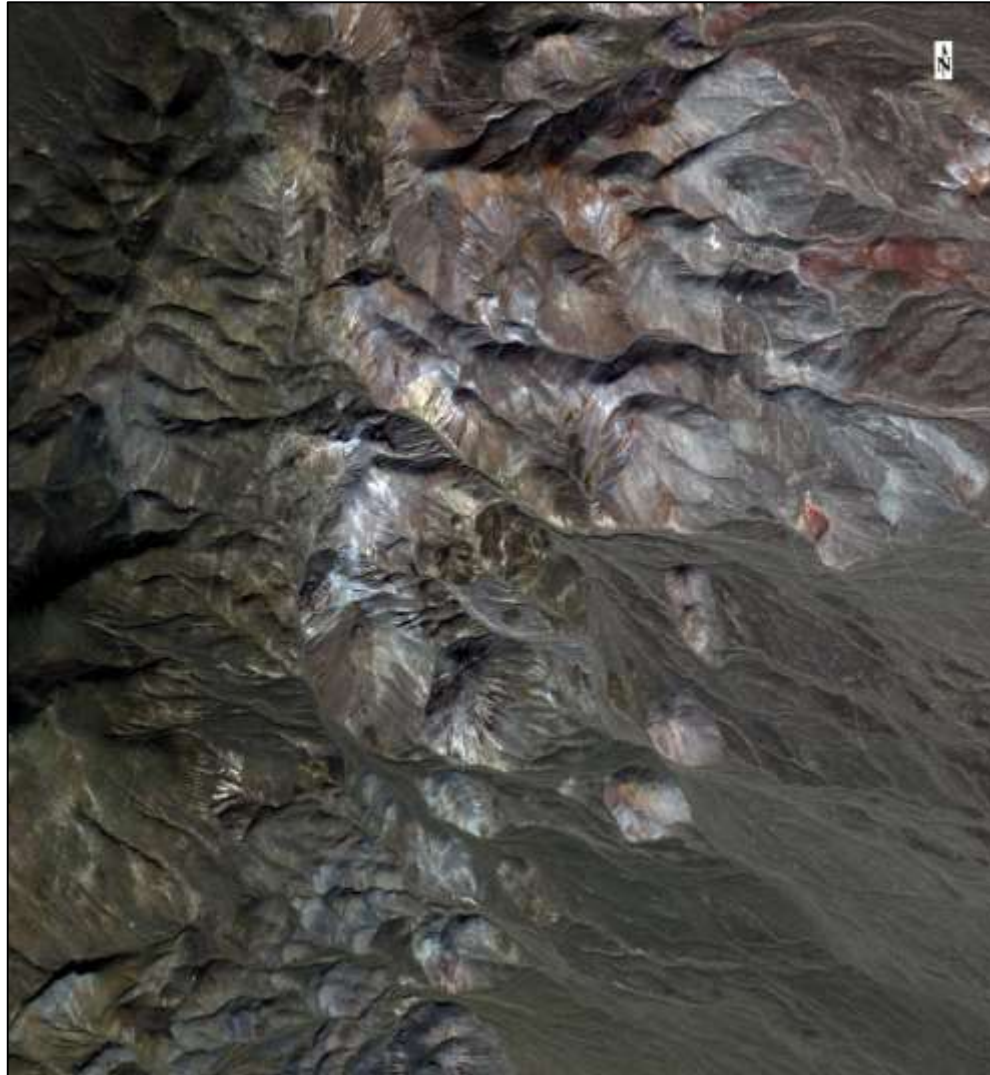


2 hectares

PRODUCTS

WorldView-3 is the only high-resolution “super spectral” (> 10 bands) satellite in the industry

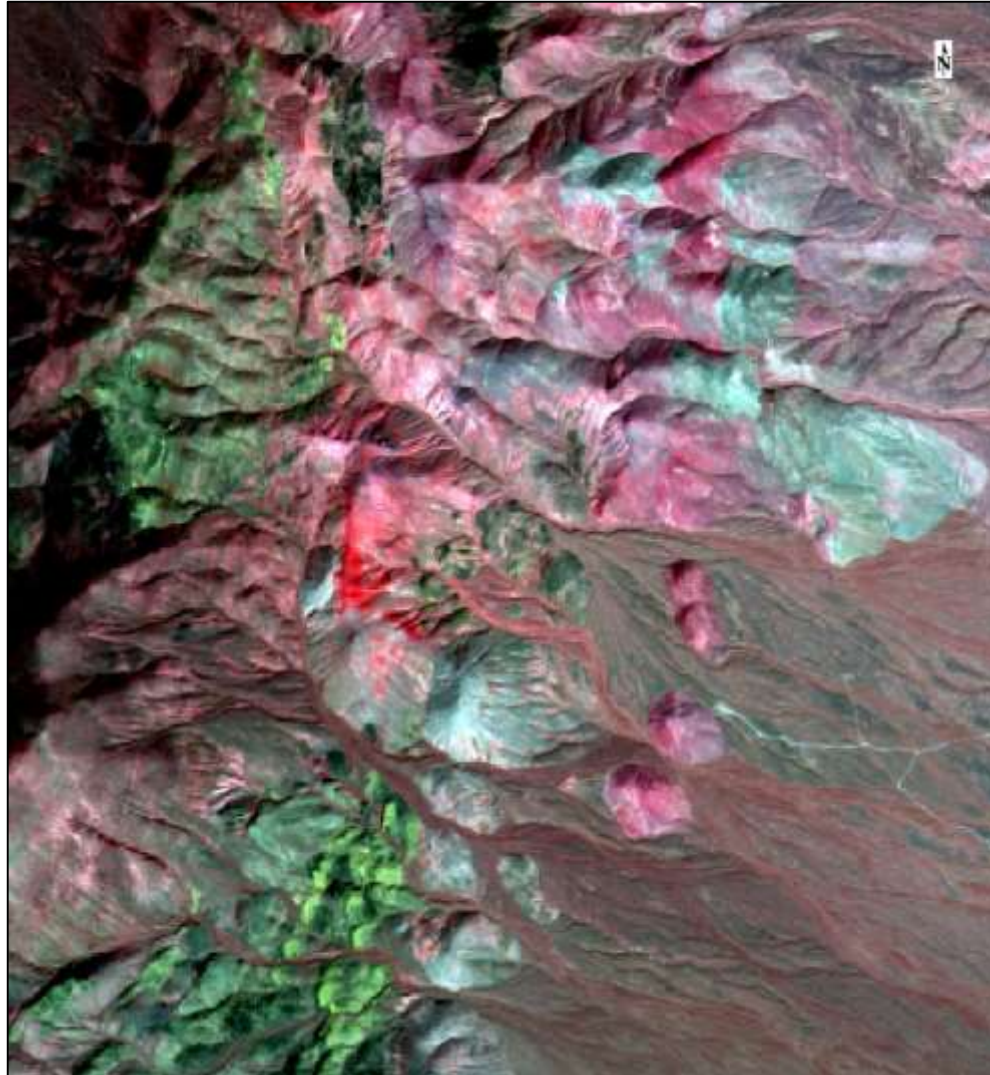
- Worldview-3 multispectral



PRODUCTS

WorldView-3 is the only high-resolution “super spectral” (> 10 bands) satellite in the industry

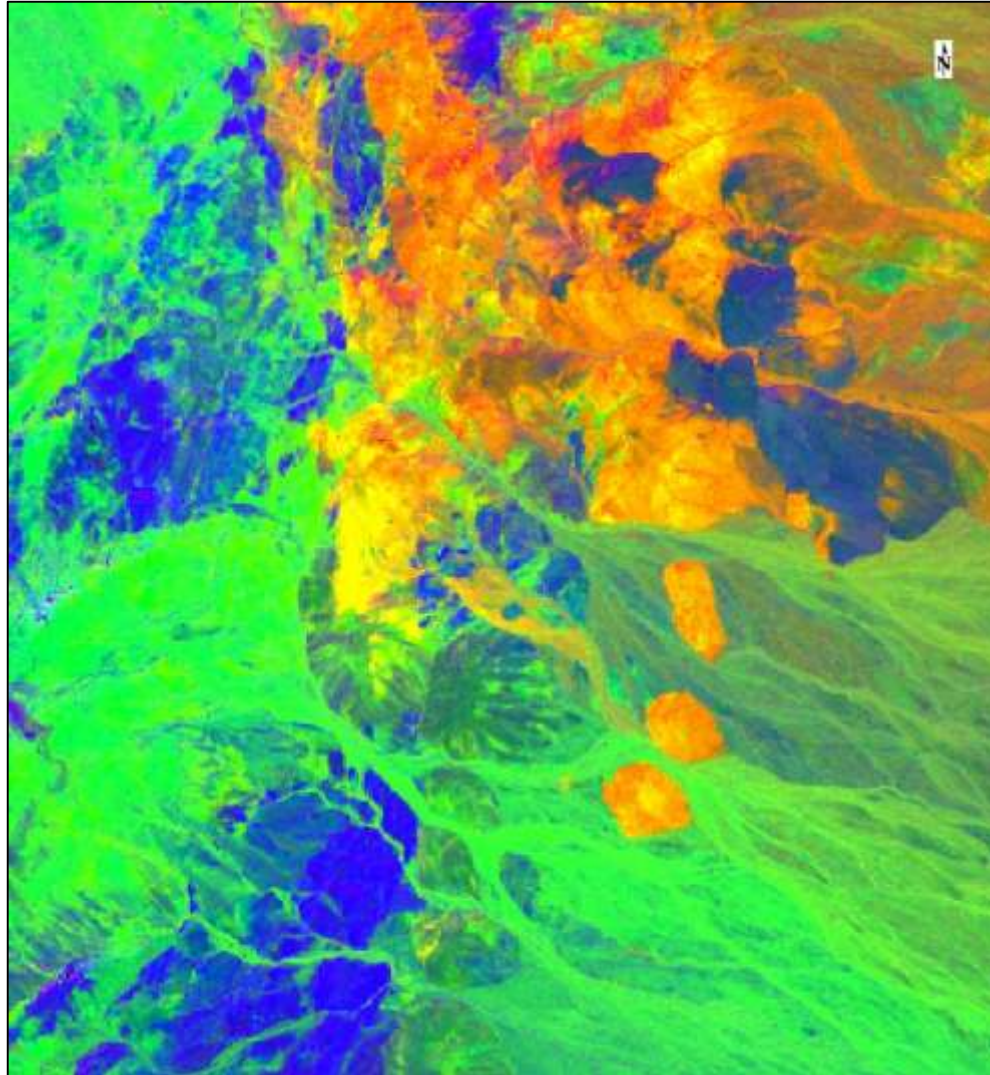
- Worldview-3 SWIR



PRODUCTS

WorldView-3 is the only high-resolution “super spectral” (> 10 bands) satellite in the industry

- Mineral mapping



PRODUCTS

ACOMP

- Improves image quality, clarity and usability of satellite imagery



PRODUCTS

ACOMP

- Improves image quality, clarity and usability of satellite imagery



PRODUCTS

ACOMP

- Improves image quality, clarity and usability of satellite imagery

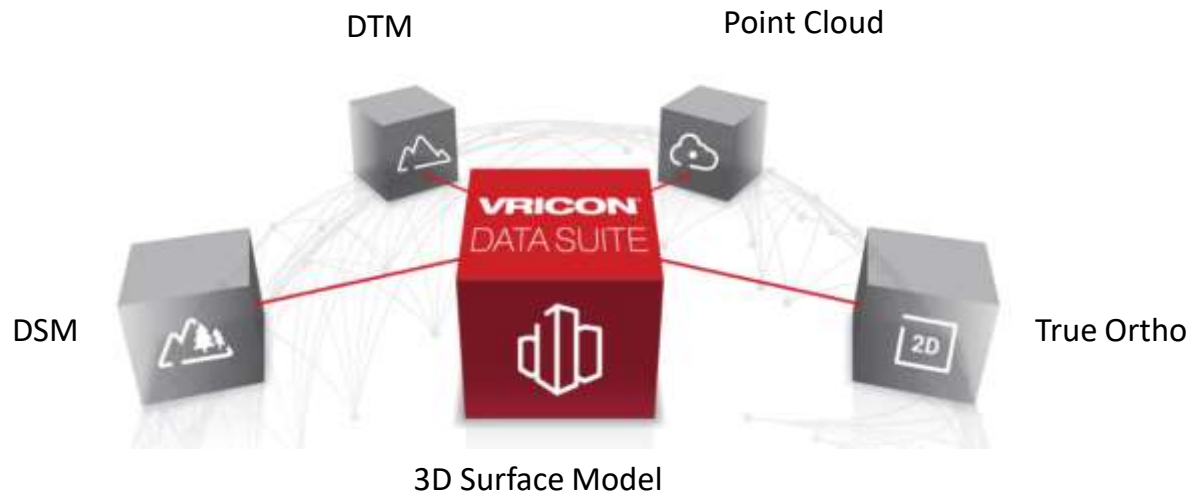
Without ACOMP



With ACOMP



VRICON Product Overview



VRICON SOFTWARE

VISUALIZE & EXPLOIT THE GLOBE IN 3D

PRODUCTS

VRICON 3D Surface Model

3m absolute accuracy without GCP



PRODUCTS

VRICON 3D Surface Model

3m absolute accuracy without GCP



PRODUCTS

VRICON 3D Surface Model

3m absolute accuracy without GCP



VRICON for Defence and Intelligence

- Geoint Foundation Data
- Georeferencing Sensor Data
- Global Targeting Grid
- GPS Denied Navigation
- Mission Planning & Rehearsal
- Preparation of the Environment
- Situational Awareness
- Helicopter Landing Zones

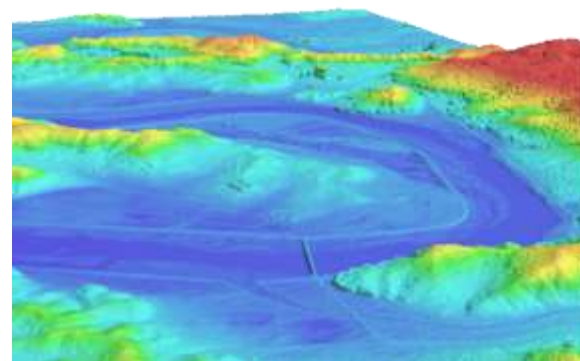
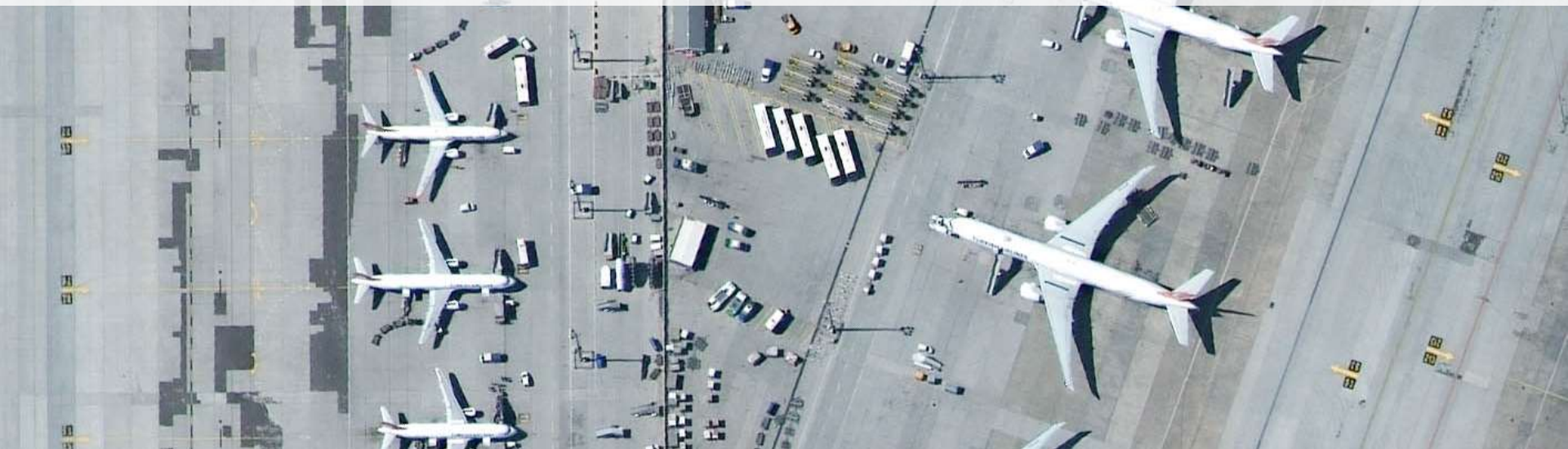


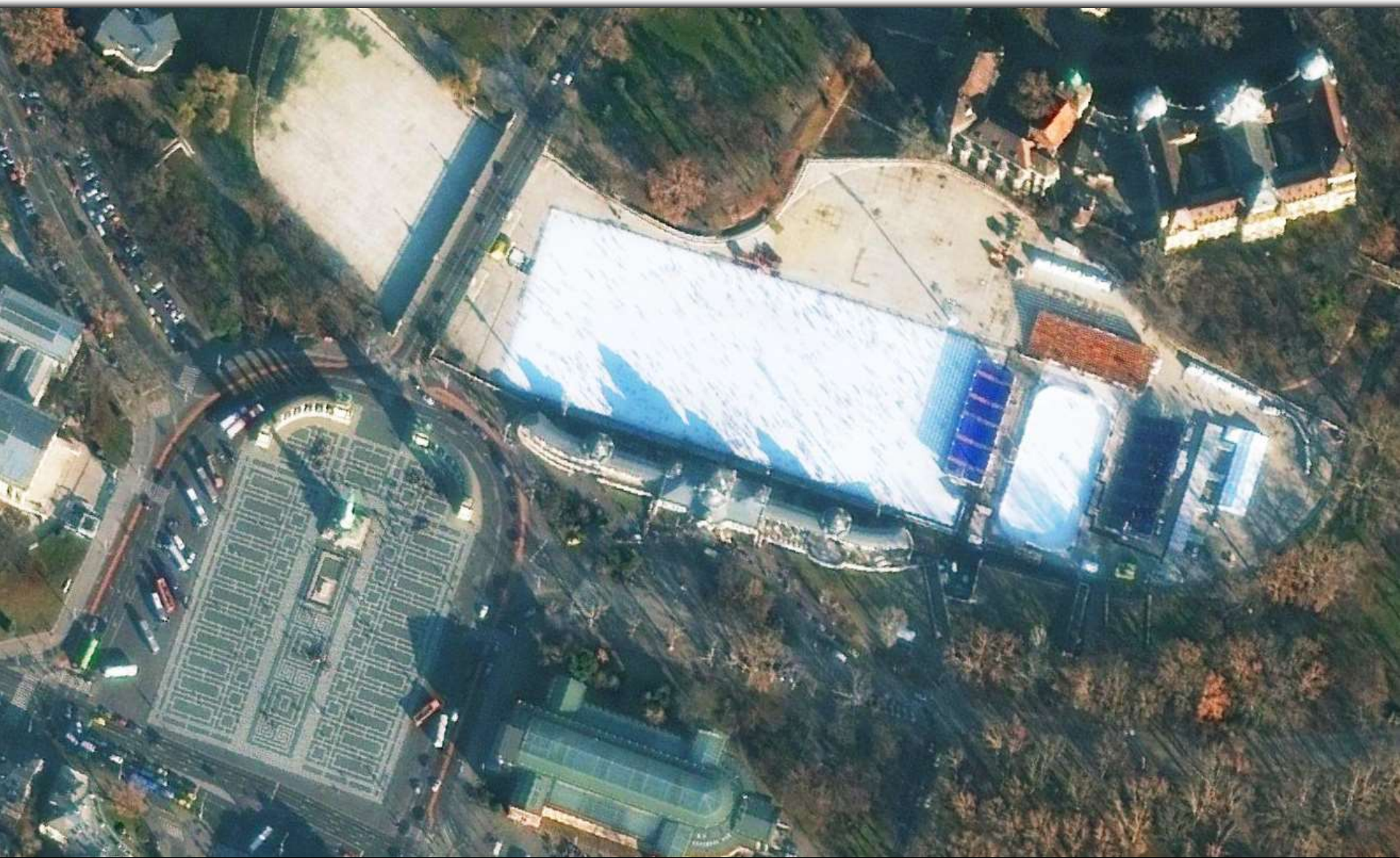


Image samples

















Announcement


Technical workshop : Very High Resolution Satellite Imagery and Applications

Presented by European Space Imaging and DigitalGlobe in partnership with GeoIQ

November 28, 2017

Danubius Hotel Arena, Budapest



A satellite is shown in orbit above the Earth's surface. The satellite is a complex structure with various instruments and antennas. The Earth's surface is visible below, showing a mix of land and water. The satellite is positioned in the upper right corner of the frame, with the Earth's horizon curving across the middle. The background is the blackness of space.

Thank you for your attention !

www.euspaceimaging.com